

## ALUMAGUARD® Flexible Weather-Proofing Jacket



**Alumaguard®** (formerly **Alumaguard® 60**) weather-proofing cladding from **Polyguard** products is the original, flexible self-healing membrane used world-wide on exterior ductwork, refrigeration and chilled water piping, tanks, vessels and equipment.

- Proven: With millions of square feet sold over the last 12 years, **Alumaguard** has the track-record engineer's favor. It replaces labor-intensive rigid aluminum and fabric/mastic systems at like or less installed cost.
- True **Zero Perm** Performance
- Self-Healing: the rubberized bituminous membrane seals small cuts punctures; is UV stable; and expands and contracts with the underlying substrate.
- Excellent emissivity and sound attenuation properties.
- Available in bright white **Alumaguard® Cool Wrap** finish which meets California Title 24, CRRC and Energy Star requirements.

### Description

**Alumaguard** is a composite membrane consisting of a multi-embossed UV-resistant aluminum foil/polymer laminate to which is applied a layer of rubberized asphalt specially formulated for use on insulated duct and piping applications. The rubberized asphalt acts as the substrate adhesive and provides the self-healing characteristics necessary to seal around punctures. Protecting the rubberized asphalt is an easily removed plastic release liner which gives **Alumaguard** its peel and stick functionality.

### Uses

**Alumaguard** is designed to be used outdoors to weather-proof exterior insulated ductwork, piping or other insulated tanks, vessels and equipment. **Alumaguard** resists moisture, air and vapor intrusion.

### Installation

All roof-top ductwork to which Alumaguard is to be applied **must** be designed with adequate slope (watershed) to prevent ponding water. Ponding water is defined as water that stays in place for greater than 24 hours.

**Notes: Prior to the installation of Alumaguard®, ducts must be sealed in accordance with SMACNA HVAC Duct Construction Standards Metal and Flexible, 3rd Edition (2005), Seal Class A.**

**Alumaguard should only be applied to faced fiberglass or faced closed-cell foam insulation board.**

**Applying Alumaguard to light density duct wrap is not recommended. Round or oval duct should be insulated with 3# or 6# pipe and tank wrap with appropriate facing.**

**Alumaguard** is a "peel and stick" product which must be applied to a properly prepared substrate. In duct applications, **Alumaguard® Lite** must be used for the underside of the duct to eliminate the need for pinning. Complete installation instructions are available on our website, [www.Polyguard.com](http://www.Polyguard.com).

### Packaging

**Alumaguard** is available in 4", 24", and 35" x 50' rolls packaged 12, 2 and 1 to a carton respectively in an embossed Foil finish.

### Limited Warranty

**Polyguard Products** warrants material to be free from leaks caused by defects in materials or manufacturing for a period of ten (10) years from the date of installation when material is applied according to installation instructions in effect at time of installation. Contact **Polyguard** for complete details on the Limited Warranty.



**Limitations**

**Alumaguard®** should be installed on a properly prepared, clean and dry substrate. **Alumaguard** must be protected from damaging chemicals including petroleum and/or coal tar solvents.

**Alumaguard** should not be adhered directly to commercial roofing membranes. For specific information regarding **Alumaguard** and commercial roofing, refer to Technical Bulletin, 2011-1.

**Alumaguard** should not be handled on the asphalt side during installation; handle edges with the release liner still attached, pull the release liner off as you press it onto the substrate.

**Alumaguard** should be stored in a clean dry area with boxes laid horizontally and not on end. Alumaguard has a recommended shelf life of 12 months.

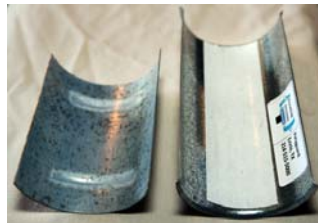
**Note: Before installing Alumaguard®, please obtain a full set of our most current installation instructions on our website, or call Polyguard at 800-541-4994.**

<b>Alumaguard® Technical Properties and Testing</b>		
<b>Membrane Property</b>	<b>Test Method</b>	<b>Results</b>
Product Thickness	Micrometer	56 mils 59 mils (Cool Wrap)
Product Weight	Scale	0.3 lbs/sf
Water Vapor Transmission (grains/hr-ft <sup>2</sup> )	ASTM E96-00	0.00
Permeance (US Perms)	ASTM E96-00	0.00
Peel Adhesion (to primed steel)	ASTM D1000	>12 lbs/in
Elongation at Break	ASTM D882	182%
Low Temperature Pliability	ASTM D146	No Cracks@-15°F
Tensile Strength (Film only)(MD) (XD)	ASTM D882	43 lbs/in 51 lbs/in
Puncture Resistance (Film Only)	ASTM D774	150 PSI
Mold Resistance	ASTM C1338	Pass
Upper Temperature Limit	LAB	160°F
Emissivity	ASTM C1371	.030
<b>Alumaguard® Cool Wrap Properties and Test Results</b>	<b>Solar Reflectance</b>	<b>Thermal Emittance</b>
Cool Roof Rating Council(CRRC) Initial	0.86	0.82
Cool Roof Rating Council(CRRC) 3 Year	0.77	0.86
Energy Star 3 Year	0.84	0.78
California Title 24	Exceeds 0.75	Exceeds 0.75

**AlumaGlide™** gliding saddles are the perfect accompaniment for use with any dynamic piping system, two saddles; the top one adhered to the insulation jacketing, the bottom with a PTFE sheet on the inside of the saddle, and ribs to keep it in place on the pipe stand or hanger, allow for movement up to 4" of a pipe system, your support saddles move with the system! No more damaged jacketing or saddles falling out. See the **AlumaGlide™** data sheet for more specific information.



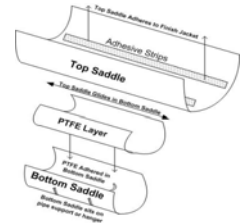
Standard Saddle



Two Piece Saddle



Stays in Hanger



Patented Glider System