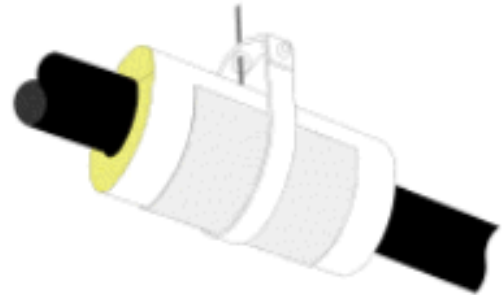


TYPE A-CASA PRE-INSULATED PIPE SADDLE



Description

The Type A-CASA is a high temperature calcium silicate insulation pipe saddle. The A-CASA saddle offers the best possible insulation values at elevated temperatures coupled with a very high resistance to compression. The simple design of this insulation pipe support is intended to simplify piping installations and provide uninterrupted runs of insulated pipes. This saddle is designed for use on piping systems in the temperature range of ambient to 1200°F (650 °C). The A-CASA saddle is available in sizes to support 1/2" diameter to 24" diameter pipes in the commercial/industrial mechanical piping markets.

Construction

The A-CASA insulated saddle is manufactured from calcium silicate insulation with a factory applied vapor retarding All Service Jacketing (WMP-ASJ) and is accompanied with a 180° galvanized sheet metal shield. The A-CASA is composed of two pieces of 180° preformed calcium silicate insulation wrapped in the WMP-ASJ vapor barrier jacketing to form a hinged one piece cylindrical piece. The saddle's one piece hinged design now opens to receive the pipe. As the connections are made and the piping is leveled, the A-CASA pipe saddle along with the sheet metal shield are slid into the hangers providing permanent insulated support. The use of insulated pipe supports when the piping is installed eliminates the need of removal any temporary leveling objects that were previously used. The overall design offers simplified pipe installation and an uninterrupted run of insulated pipe. The calcium silicate insulation's gold coloring provides a positive identification of its asbestos free composition. The A-CASA meets the Standard Practice guidance of MSS-SP-58, 9.2.2 for Type 40 protection shields and MSS-SP-69, Table 5, maximum hanger spans when band type hangers are used.

Advantages:

- Uninterrupted runs of insulated pipes
- Assist with piping alignment
- Safety, eliminates potential falling out of temporary blocks of wood
- Ease of installation with neat and clean appearances at hangers
- Asbestos and CFC free

Designed for: · Hot Water · Steam · Condensate · Dual Temperature · Process · Air · Gas ·

Temperature Range: Ambient to +1200°F (+650°C)

Available sizes:

- Nominal Pipe Sizes: 1/2" through 24"
- Tubing Sizes: 5/8" through 6-1/8"
- Other diameter pipe or tubing sizes available

(See reverse side for physical properties)

Physical Properties of the A-CASA Saddle:

A.) Calcium Silicate Insulation:

| | |
|------------------------------------|--|
| Density: (ASTM C 302) | 14 lbs. per cu. ft. (232kg/m ³) |
| Compressive Strength: (ASTM C 165) | 100 psi (690 kPa) to produce a 5% compression |
| Flexural Strength (ASTM C 203) | 65 psi (446 kPa) |
| Insulating Values: (ASTM C 518) | k - value .33 BTU·in/hr·sf ² · °F @ 75°F R - value 3.03 Hr·ft ² · °F/BTU @ 75°F@1"thick |

B.) All Service Vapor Barrier Jacketing (WMP-ASJ)

| | |
|---------------------------------------|------------------------|
| Water Vapor Permeability (ASTM E96-A) | .01 perms per inch |
| Bursting Strength (ASTM D774) | 100 lbs/inch |
| Tensile Strength (ASTM C1136) | 75 lbs./inch average |
| Mold Resistance (ASTM C665 / C1338) | No growth of organisms |

* Other jacketing's are available: PVC, Aluminum, Stainless Steel, Tedlar & Hypalon

C.) Sheet Metal Shield

| | |
|--------|---|
| Type: | Galvanized Steel (Stainless Steel shield also available) |
| Gauge: | 22 - 12 gauge, based on pipe size, insulation thickness and saddle length |

Notice: Any construction material which will be placed overhead of any personnel should be evaluated for a potential falling hazard. During installation it may be necessary to add a securing band to the pipe support where excessive pipe movement could occur during installation and operation may cause support to fall out.

Since use conditions and government regulations may differ from one location to another, and may change with time, it is the Buyer's responsibility to determine whether this product is appropriate for Buyer's use and to assure Buyer's use, workplace and disposal practices are in compliance with laws, regulations, ordinances and other government enactments applicable in the jurisdiction have authority over the Buyer's operations.