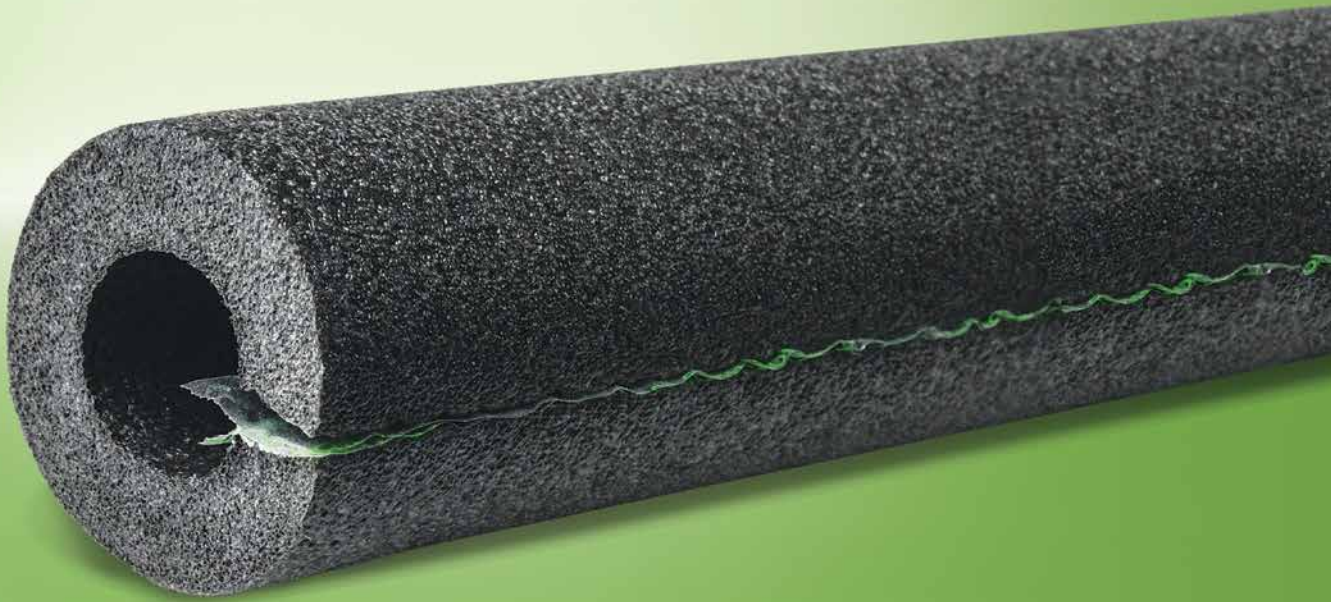


Fiber Free

Tubolit[®] SS

Tube Insulation

The economical polyethylene insulation, with a labor-saving self-seal system, for plumbing lines



- Closed-cell structure provides condensation and energy loss control
- Flexible material and self-seal system makes application easy and reduces installation time
- Economical choice for plumbing lines
- Plenum Rated

 armacell[®]



GREENGUARD Certified products are certified to GREENGUARD standards for low chemical emissions into indoor air during product usage. For more information, visit ul.com/gg.

Technical Data: Tubolit® SS (Self-Seal)

Description:

Black flexible polyolefin/polyethylene thermal insulation in tubular form with a self-seal system

Specifications Compliance:

MEA 6-02-M

ASTM C 1427 Type 1

Approvals, Certifications, Compliances:

- GREENGUARD Gold Certified.
- All Armacell facilities in North America are ISO 9001:2008 certified.
- Manufactured without CFCs, HFCs, HCFCs, PBDEs, or Formaldehyde.
- Plenum Rated

Typical Properties

Specifications:	Values	Test Method:
Thermal Conductivity: Btu • in./h • ft ² • °F (W/mK) 75°F Mean Temperature (24°C)	0.25 (0.036)	ASTM C 177 or C 518
Water Vapor Permeability: Perm-in. [Kg/(s • m • Pa)]	0.00 (0.0 x 10 ⁻¹³)	ASTM E 96, Procedure A
Flame Spread and Smoke Developed Index: ¹	25/50 rated	ASTM E 84 UL 723 NFPA 255
Mold Growth: Fungi Resistance : Bacterial Resistance:	Passed	UL181 ASTM G21/C1338 ASTM G22
Upper Use Limit: ²	180°F (82°C)	ASTM C534
Lower Use Limit: ²	-297°F (-183°C) ³	ASTM C534
Ozone Resistance:	GOOD	—

Sizes:

Wall Thickness (nominal)	3/8" 1/2", 3/4" and 1" (10, 13, 19 and 25mm)
Inside Diameter, Tubular Form	3/8" to 4" IPS ID (10mm to 114mm ID)
Length of Sections, Tubular Form	6' (1.83m)

¹ Cellular plastics and thermoplastics, such as polyethylene/polyolefin insulation, that may drip, melt, delaminate or draw away from the fire, present unique problems and require careful interpretation of the test results.

² See Armacell Technical Info-Service #010.

³ For applications of -40°F to -297°F (-40°C to -183°C), contact Armacell.

ARMACELL LLC

TEL: 800.866.5638

FAX: 919.304.3847

info.us@armacell.com

www.armacell.us

7600 Oakwood Street Extension, Mebane, NC 27302



Armacell provides this information as a technical service. To the extent the information is derived from sources other than Armacell, Armacell is substantially, if not wholly, relying upon the other source(s) to provide accurate information. Information provided as a result of Armacell's own technical analysis and testing is accurate to the extent of our knowledge and ability, as of date of printing, using effective standardized methods and procedures. Each user of these products, or information, should perform their own tests to determine the safety, fitness and suitability of the products, or combination of products, for any foreseeable purposes, applications and uses by the user and by any third party to which the user may convey the products. Since Armacell cannot control the end use of this product, Armacell does not guarantee that the user will obtain the same results as published in this document. The data and information are provided as a technical service and are subject to change without notice.